

WHEEL WASH SOLUTIONS FOR HEAVY EQUIPMENT



NEPTUNE
AUTOMATED WASH SOLUTIONS

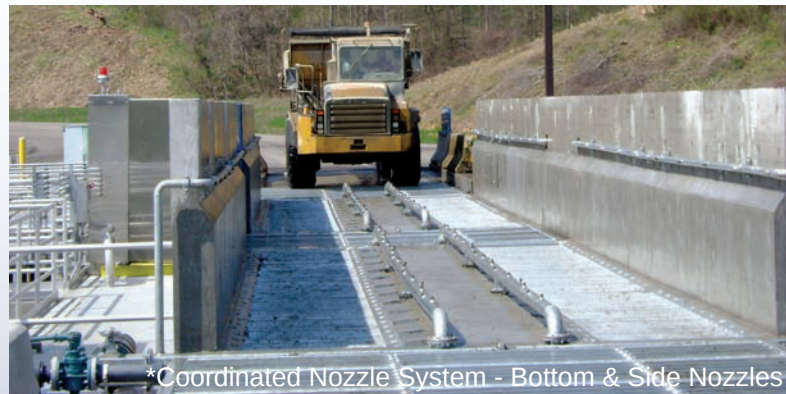
LEADING THE
CLEAN ROAD
REVOLUTION

HERCULES :: EXTRA HEAVY DUTY

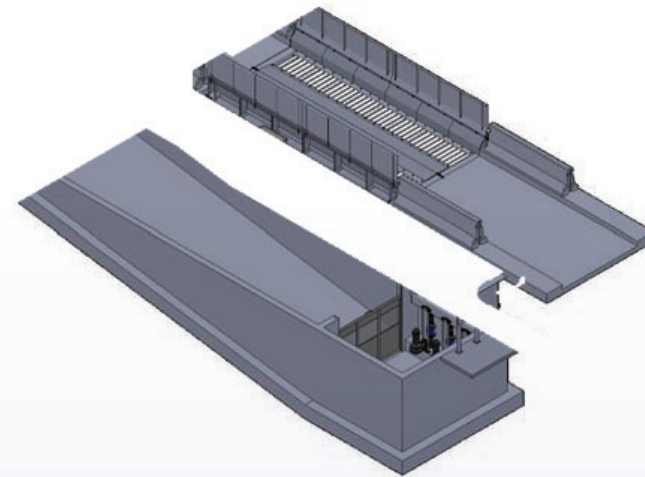
- Ideal for 40 Ton Haul Trucks And All Large Wheeled Equipment
- Handles All Soil Types Including Fly Ash, Heavy Clay, Tailings & Organics Such As Overburden
- Truck Volume: Up To 1200 Trucks Per Day With Correctly Sized Tank



* With Undercarriage Wash



*Coordinated Nozzle System - Bottom & Side Nozzles

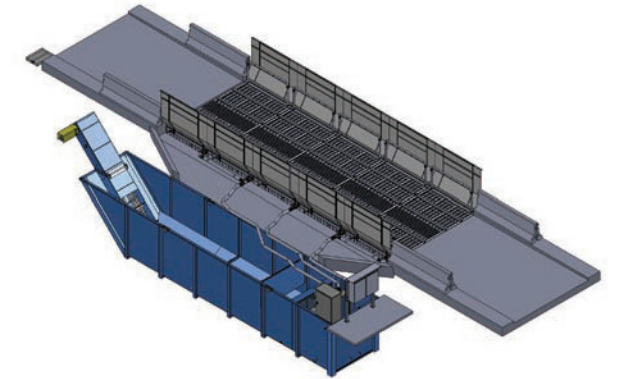


- Concrete with fully galvanized wash platform
- Pump curve sized to height of large vehicle undercarriages and tires which delivers highly consistent volume and spray pressure
- Tank heater system available
- Oil separator package available

Two, Three or Four Tire Revolution Systems (Custom Lengths Available)
Width Can Accommodate Any Size Of Heavy Equipment
Undercarriage Wash Reduces Long Term Wear On Chassis Components
Back Wash Flushes Any Solids Off The Exit Ramp
Turbowash For Extra Wash Power With Dual Tire Vehicles

The HERCULES Series delivers the most durable wheel wash system on the market and is ideal for permanent applications. Assembled on site, this system consists of a concrete substructure and center sections for the wash platform and concrete stem walls, coupled with galvanized steel side walls. Typically, the HERCULES Series is installed with a three compartment concrete water recycling and solid separation tank. The tank is designed with one sloped compartment to allow solids to be removed with a front end loader. Tank can also be designed to have solids removed with a backhoe or a scaper conveyor.

HEAVY EQUIPMENT WASH SYSTEM TRACKED & TIRED VEHICLES



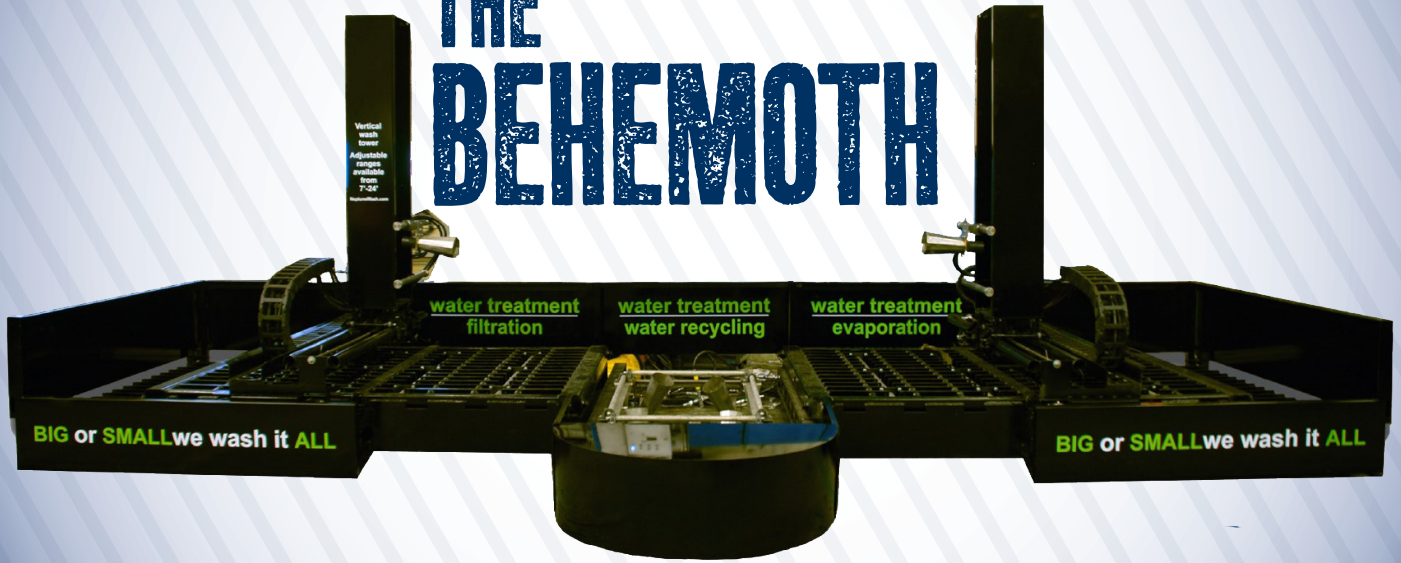
Use On All Types Of Wheeled Equipment - Wheel Loaders, Haulers, Scapers, Etc.

Closed Loop Recycled Water - Solids Removed With A Scaper Conveyor
Reduces Maintenance Costs and Increases Uptime



Tanks can be used in-ground or above ground.
Complete water recycling and solid separation capability.
Can include undercarriage trolley for undercarriage.

THE BEHEMOTH



THE BETTER SOLUTION — NEPTUNE'S HIGHLY POWERFUL & EFFECTIVE EQUIPMENT WASH

