

# DRY FLOCCULENT MIXING SYSTEM

LEADING THE  
**CLEAN ROAD**  
REVOLUTION

- » The mixer is capable of flows up to 160gpm at 20 psi this allows you to treat up to 9600 gallons per hour or just over 230,000 gallons in a 24 hour period
- » The unit runs on a 15 amp 120 volt power supply
- » Capable of continuous operation
- » 2" cam lock fitting on the supply and discharge side
- » Designed to be used with a 2" trash pump
- » Can be quickly setup on any site



- » Pump water into unit then out to dirt bags or returned to settling pond
- » Holds 100 lbs of dry flocculant
- » Constructed from stainless steel for long life
- » Aluminum weather tight box to protect dry volumetric feeder from elements
- » Made in the USA



Dry Flocculent Mixing System allows you to rapidly blend a dry flocculent into turbid storm water. This allows the solids to settle out very quickly. You can then discharge the clean water off site. Our system provides a simple & inexpensive way to treat and release.

\* Patents Pending as distributed by IES and manufactured by Innovative Turf Solutions LLC

Manufactured by:



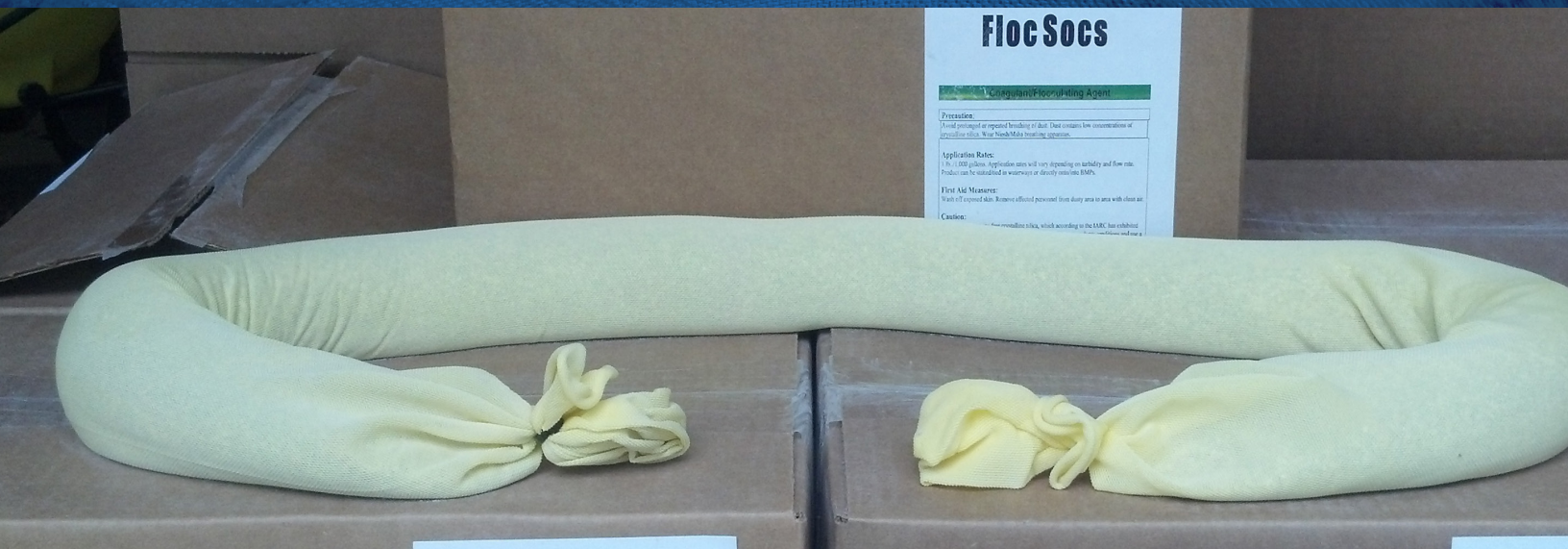
866.303.4IES • 501.525.8484 • NeptuneWash.com





# DRY FLOCCULENT FLOC SOC

LEADING THE  
**CLEAN ROAD**  
REVOLUTION



- » Flocculates/Coagulates sediment
- » Breaks emulsified oils
- » Encapsulates heavy metals or entrained oil
- » Increased Settling Rates
- » Improved Flocculent (Floc) Shear and Mixing
- » Enhanced BOD/TSS Removal
- » Sludge Leachability Tests with reduced
- » Environmental Liability
- » Reduced Impact on TDS/EC
- » Meets US EPA TCLP (Toxic Characteristic Leaching Procedure) testing
- » Works Over Broader pH Ranges (4 to 12)
- » Reduced Costs

"Floc Socs" can be implemented in your waste stream, ditch channel, sediment basin or pond by attaching the "Floc Soc" to a string/rope and staked into the ground. Pond and sediment basin applications can also be attached in multiples on a string/rope that spans the width of a basin or pond. The "Floc Soc" application insures proper dosing as the Floc™ is dissipated according to turbidity and water flow, allowing for consistent dosing, relieving the contractor of multiple applications, therefore reducing time/labor costs." Floc Socs" are a great tool for reducing the turbidity, hydrocarbons and heavy metals from your wastewater.

"Floc Socs" can also be used in conjunction with typical Sediment Retention Devices such as wattles, silt fence, ditch checks and hay bales by attaching the "Floc Socs" via a "zip tie" to the sediment retention device (SRD). Replacement socs can then be attached over and over to the SRD when the flocculant has been dissipated out, therefore increasing the effectiveness of the SRD in controlling turbidity, heavy metal and hydrocarbon reduction.

Manufactured by:



\* Patents Pending as distributed by IES and manufactured by Innovative Turf Solutions LLC

866.303.4IES • 501.525.8484 • NeptuneWash.com